

Top Unmet Needs

Publications Distributed

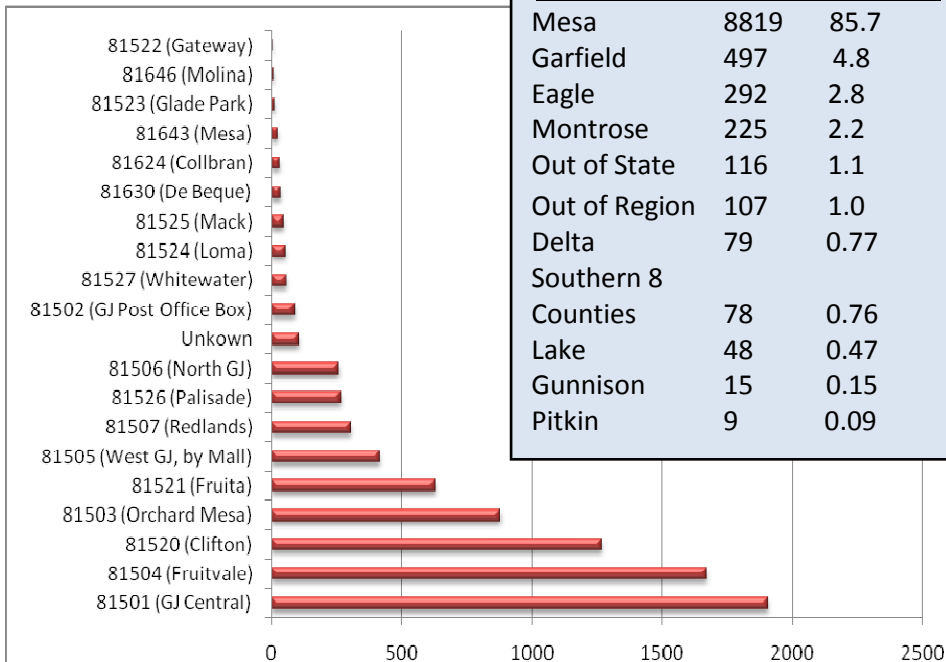
Need Category	No. Calls	Publication	No. Publications
Financial Assistance	71	Western Colorado 211 Brochures	6,238
Rental Assistance	53	Working Your Way Through the Child	
Utility Bill Assistance	39	Care Maze	1,034
Legal	16	Western Colorado 211 & Piton Foundation	
Medical	15	Free Tax Sites Brochure	1,025
Transportation	13	Western Colorado 211 & Mesa County	
Seasonal	10	Food Brochures	546
Child Care	9	LEAP Applications	521
Basic Needs	6	Mesa County Housing Information	162
Education	6	Food Stamp Applications	131
Housing	6	Medicaid/CHP+ Applications	110

282 Total Unmet Needs

9,767 Total Publications Distributed

Calls By County

Breakdown of Mesa County Calls



Calls by County

County	No. Calls	% of all calls
Mesa	8819	85.7
Garfield	497	4.8
Eagle	292	2.8
Montrose	225	2.2
Out of State	116	1.1
Out of Region	107	1.0
Delta	79	0.77
Southern 8 Counties	78	0.76
Lake	48	0.47
Gunnison	15	0.15
Pitkin	9	0.09



2009 Annual Data Report

Dial 2-1-1 or 888-217-1215

2897 North Avenue, GJ, CO 81501

Charity Brockman, Director

Phone (970) 257-2203

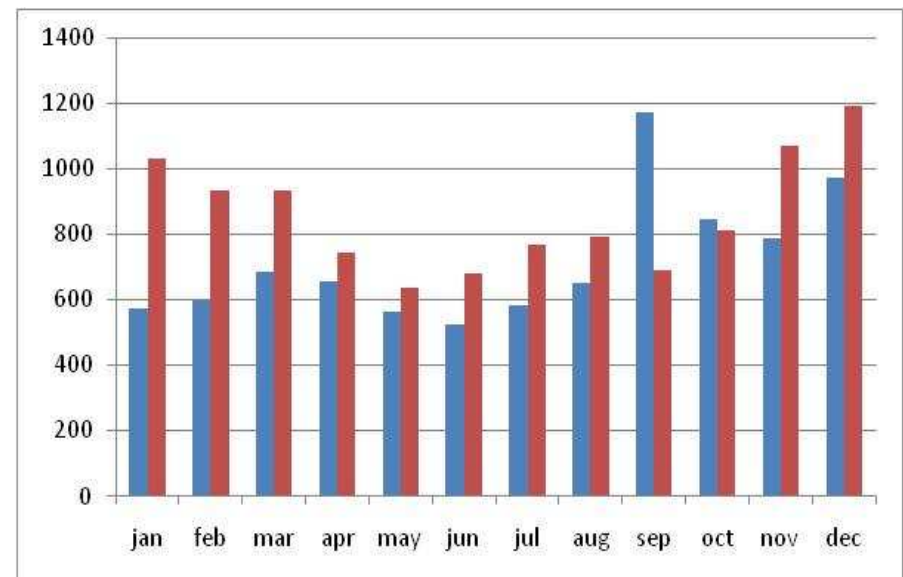
charity.brockman@mesacounty.us

Fax (970) 257-2219

Total Calls

	2008	2009	% Change
Total Calls	8,618	10,285	19.34
Total Referrals	8,991	10,986	22.19

Calls Per Month: 2008/2009 Comparison of Total Calls

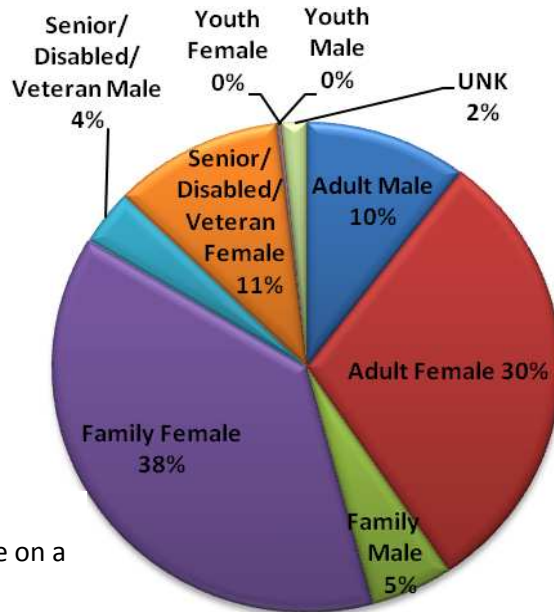


2008

2009

Caller Age Group Breakdown

Adult Male	1068
Adult Female	3102
Family Male	540
Family Female	3891
Senior/Disabled/ Veteran Male	377
Senior/Disabled/ Veteran Female	1109
Youth Male	12
Youth Female	26
UNK	160
TOTAL	10,285



Family callers have at least (1) child under the age of 18yrs in the home on a full time basis. Seniors are 60+.

Top Referral Agencies

Agency Name	No. of Referrals
Western Colorado 2-1-1 LEAP (LEAP Pre-Qualification and General Inquiries)	1761
Child Care Resource and Referral of Mesa County	1036
Mesa County Dept Human Services, Self Sufficiency/Child Support	931
Mesa County Health Dept	494
Salvation Army	411
Community Food Bank	401
Volunteer Income Tax Assistance VITA	365
Mesa County Work Force Center	197
Mesa County Dept Human Services, Adult Services	161
Grand Valley Catholic Outreach	161
Housing Resources of Western Colorado	156
Colorado Legal Services	151
Clifton Christian Church	137
Grand Junction Housing Authority	130
Hilltop Community Resources	116
St Mary's Hospital	111
Mesa County Dept Human Services, Child Welfare Services	82
Seventh Day Adventist Community Service Center	83
Housing Resources of Western Colorado	82
Adult Resources for Care & Help (ARCH)	80
Marillac Clinic	74
Social Security Administration	50
Mesa County Valley School District #51	45
Colorado Dept of Labor and Employment	44
Colorado West Mental Health	40
Homeward Bound of the Grand Valley	37
Grand Valley Transit / Para-Transit	33
Garfield County Housing Authority	25
RSVP Mesa County	22

Top Referral Categories

